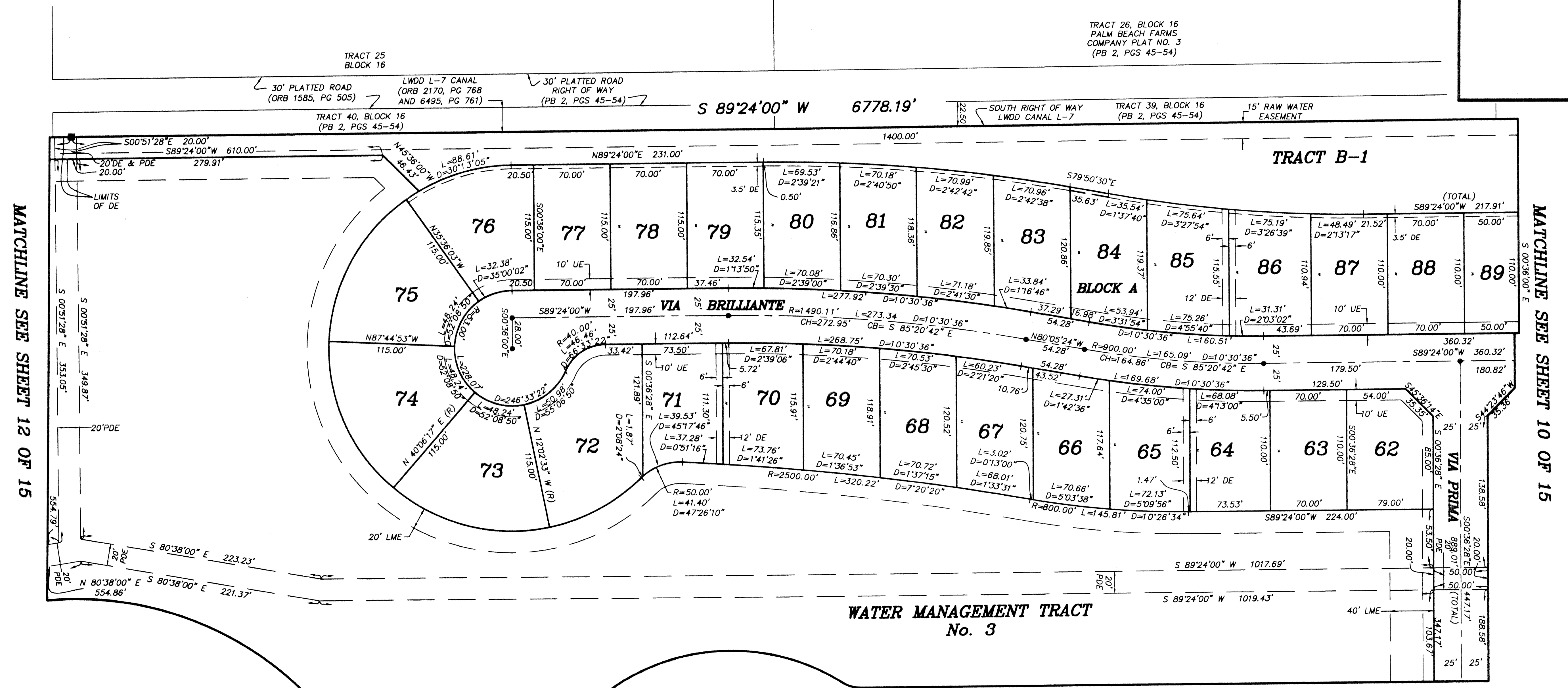


BUENA VIDA
 BEING A REPLAT OF A PORTION OF BLOCKS 16 AND 17 OF PALM BEACH FARMS COMPANY
 PLAT No. 3, AS RECORDED IN PLAT BOOK 2, PAGES 45 THROUGH 54 OF THE PUBLIC
 RECORDS OF PALM BEACH COUNTY, FLORIDA, IN PART OF SECTIONS 7 AND 8, TOWNSHIP
 44 SOUTH, RANGE 42 EAST, VILLAGE OF WELLINGTON, PALM BEACH COUNTY, FLORIDA.
 SHEET 11 OF 15
 MARCH 2002

TRACT 26, BLOCK 16
 PALM BEACH FARMS
 COMPANY PLAT NO. 3
 (PB 2, PGS 45-54)

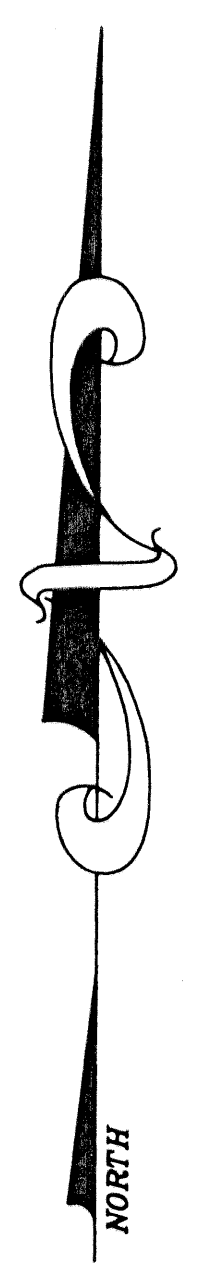
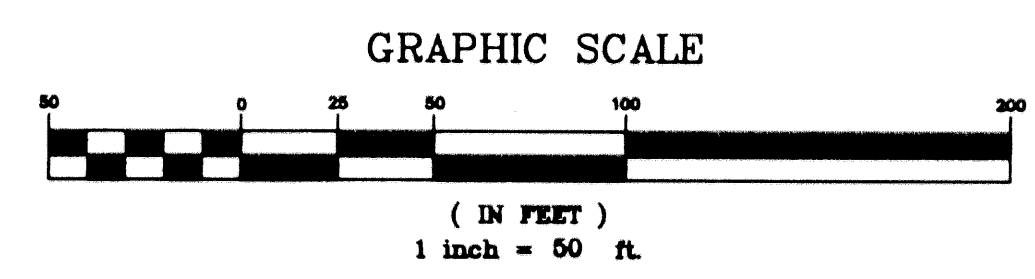


MATCHLINE SEE SHEET 12 OF 15

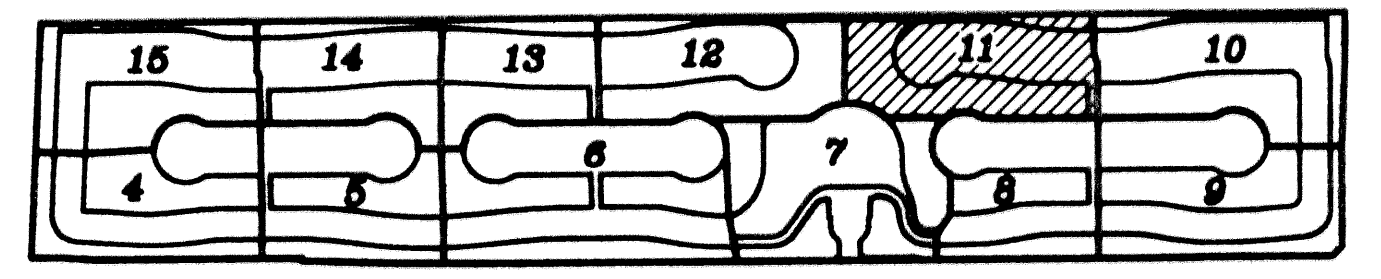
MATCHLINE SEE SHEET 10 OF 15

MATCHLINE SEE SHEET 7 OF 15


MATCHLINE SEE SHEET 8 OF 15



- LEGEND:**
- D= DELTA (CENTRAL ANGLE)
 - L= LENGTH
 - R= RADIUS
 - PB= PLAT BOOK
 - O.R.B.= OFFICIAL RECORD BOOK
 - PG= PAGE
 - = PERMANENT REFERENCE MONUMENT "LB 4318" (UNLESS OTHERWISE NOTED)
 - = PERMANENT CONTROL POINT "LB 4318"
 - (R)= RADIAL
 - UE= UTILITY EASEMENT
 - DE= DRAINAGE EASEMENT
 - MREE= MAINTAINENCE & ROOF EAVE EASEMENT
 - LME= LAKE MAINTAINENCE EASEMENT
 - LAE= LIMITED ACCESS EASEMENT
 - WMT= WATER MANAGEMENT TRACT
 - PLS= PROFESSIONAL LAND SURVEYOR
 - PSM= PROFESSIONAL SURVEYOR & MAPPER
 - LSB= LICENSED SURVEYING & MAPPING BUSINESS
 - CH= CHORD DISTANCE
 - CB= CHORD BEARING
 - LWDD= LAKE WORTH DRAINAGE DISTRICT
 - PBC= PALM BEACH COUNTY
 - PDE= PUBLIC DRAINAGE EASEMENT



SHEET INDEX

BUENA VIDA		SHEET NO.	SCALE: 1" = 50'
	NICK MILLER, INC. Surveying & Mapping Consultants	11	DATE: MARCH 2002
			JOB NO. 1008.009
			FILE: 1008.09
			SUITE 105 2560 RCA BLVD. PALM BEACH GARDENS, FLORIDA 33410 TEL 561 627-5200 FAX 561 627-0983 D.B.P.R. LICENSED BUSINESS No. 4318